



**BCI** *G*reen Design Award 2010  
**GREEN LEADERSHIP AWARD**  
Institutional Architecture

*Award-winning architect firm setting global standards of unparalleled excellence, delivering the next-generation of residential, mediplex and urban space development solutions with community conscience across Asia Pacific.*



we build  
success



ab

GPS  
N 07° 53' 49.1"  
E 098° 22' 00.0"


where  
**We** are

**ablearchitects**

38/5 Moo 5, Bang-yai Road, T. Vichit A. Muang, Phuket, Thailand 83000

T: +66 (0) 7624 8135 M: +66 (0) 8512 71944 F: +66 (0) 7630 4172 Email: [info@ablearchitects.com](mailto:info@ablearchitects.com)

[www.ablearchitects.com](http://www.ablearchitects.com)



Headquartered in Phuket, Thailand, Able Architects is an esteemed, award-winning architect and construction consultancy firm setting world-class standards in the residential, hospitality and urban development industry across the Pacific Rim.



what  
We<sub>do</sub>

Able Architects can deliver a full range of property - development services in providing all the additional services needed for a project's development, including surveying, cost control and legal assistance. Being able to co-ordinate all project - related tasks allows us to ensure that projects progress according to plan, smoothly and efficiently, greatly reducing the possibility of costly delays.

#### ARCHITECTURE

We have a core team of contemporary and very creative yet practical architects in the heart of our organization, each one of them specialising in a particular area of expertise.

The team is led by Able Architects's director Mr. Pakhin, however, individual developments are handled by the architects in team who are best suited to carry that project out.

Even if a structure is almost completely made of glass, the correct use of materials and knowledge of how to apply them ensures an economical and ecological solution - no matter how outlandish the design.

For example, we create designs that keep electricity bills low by reducing the need for expensive cooling, which can be achieved by designing a structure that allow air to flow through it and by using the best heat - reflective materials along, plus strategic use of shade incorporated into the design.

#### STRUCTURAL ENGINEERING

To us, a building must only be uniquely beautiful, it must also be built to the highest standards while allowing our designer's creativity to flow unrestricted. Our engineers apply the latest technological advances in structural engineering ensure projects are stunningly modern yet sturdy and safe.

We source the best materials in the industry to ensure the structures created by us are of the highest global safety and ecological standards and made to last a lifetime. Also, every effort is made to design buildings that are economically sustainable and working harmony with the elements and surrounding environment.

#### LANDSCAPE ARCHITECTURE

A building's surroundings should be one of the first considerations when embarking on an architectural project. Correct landscaping ensures that a project will be aesthetically pleasing and will serve its purpose to its fullest potential, so landscaping is best done in conjunction with the planning of a development to create harmonious balance between the building and its surroundings.

#### PROJECT MANAGEMENT

Our aim is to give clients peace of mind that projects run smoothly and efficiently by offering project management services that encompass all aspects of a development. We undertake tasks such as cost control, site planning and logistics to ensure construction proceeds unhindered.

When embarking on a development, we help clients prepare all the necessary documentation in order to execute administrative tasks correctly and efficiently. We also operate a highly efficient administrative system to ensure projects are carried out correctly, to the law and in the most cost - effective way.

#### PROPERTY BRAND MANAGEMENT

We help clients to establish, manage and promote the brand of their project so that it seen by the public as having a distinct personality and one that is synonymous with quality.

The Mangrove Panwa Baan Tak R Kard Q Concept Justin  
Prasit's House The Lantern Blue Point Boat Avenue  
Floritude Shino Bypass Kameha Natai The Sky 2  
Surin Plaza 2 Interior Andaman Embrace Kamala Falls  
Royal Place ECO Office Bang La Project Arco Mantra  
Sun Sweet Home Creative Living Hin Tang Villa  
Villas Medica Lake Side Bliss Park APEX Service Apartment  
MOCA Residence PARK EXO Spectrum Service Apartment  
AAC Office Modern Thai Village Agoda Office B Square  
Orang Laut Cultural Center  
Apex Bypass I Condo The Mergence Head Office  
Arco Mantra The Sky 2 The Mangrove Panwa  
Modern Thai Village Lake Side Bliss Park Royal Place ECO Office  
The Lantern Boat Avenue APEX Service Apartment  
Interior Andaman Embrace Creative Living MOCA Residence  
Spectrum Service Apartment The Mergence Sun Sweet Home  
PARK EXO Bang La Project Baan Tak R Kard Q Concept  
Kameha Natai Surin Plaza 2 Apex Bypass I Condo

projects  
We did



## Conceptual Design

Orang Laut Cultural Center Project relates closely to the life of the sea gypsies. All contents of the exhibition and activities involve lifestyle, society, and culture of the Orang Laut sea gypsies. When looking at their way of life, "local fish trap" seems to be one of the most significant tools used for generations along the Andaman shore. That inspired the idea behind the design of the center itself. While the local fish trap was structured in a way that fish could come in but never go out, Orang Laut Cultural Center will draw people in, touch their hearts, and captivate their minds.





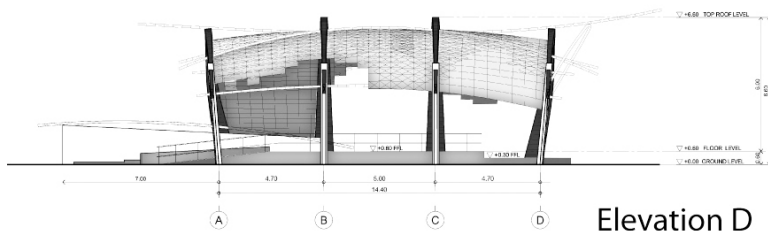
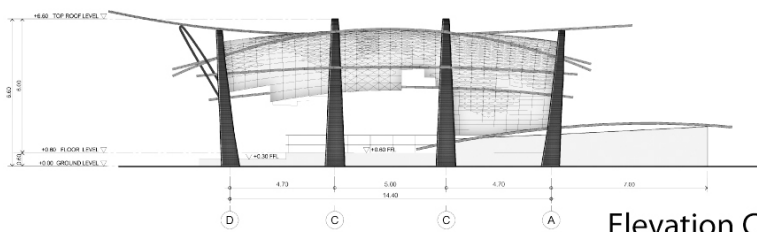
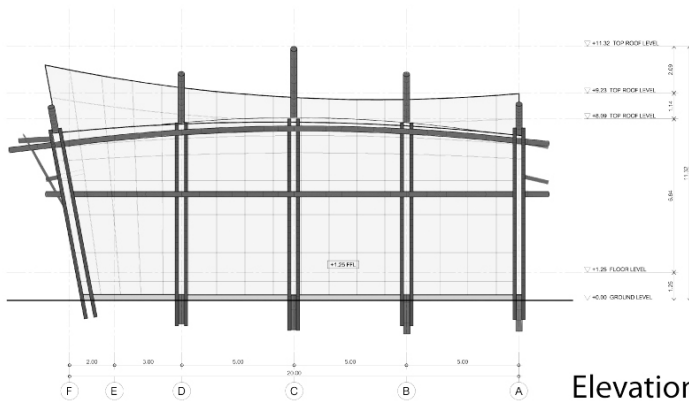
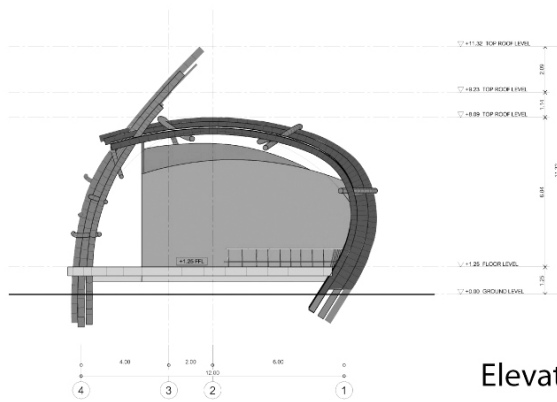
# Orang Laut Cultural Center

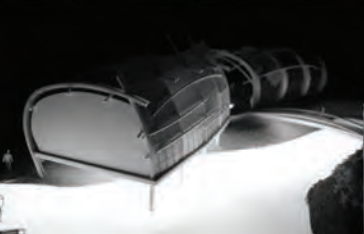
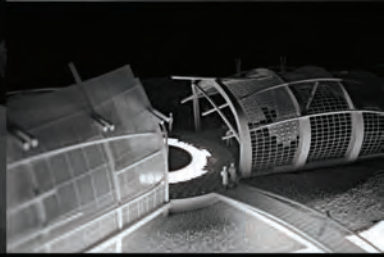
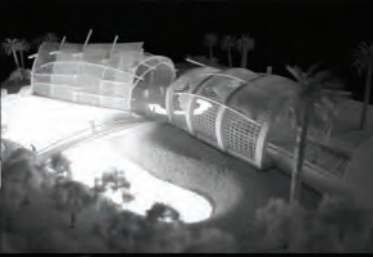
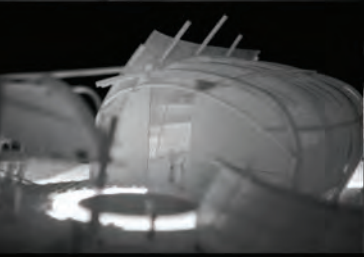
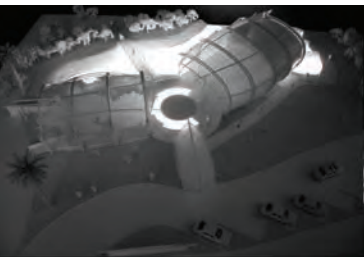
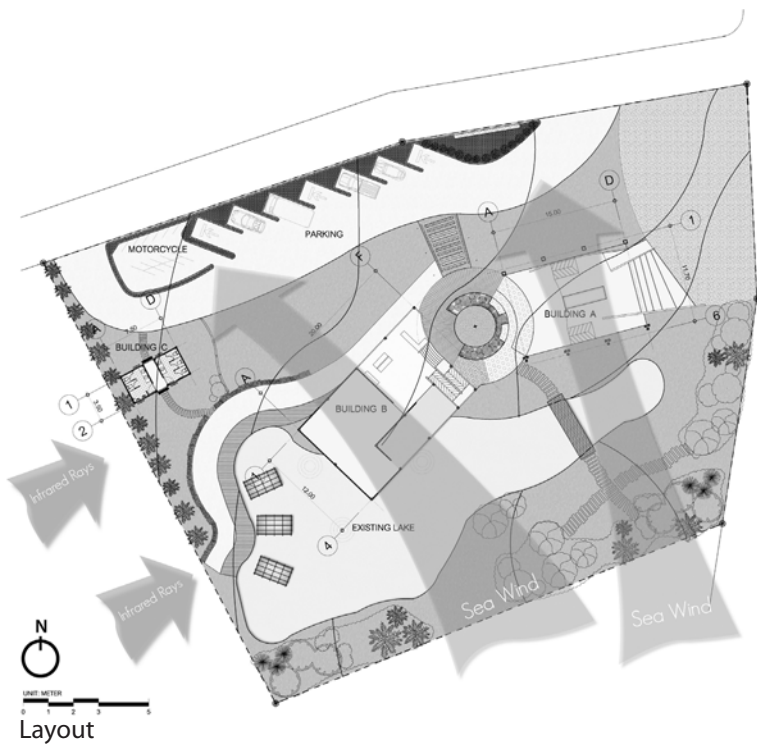
T.Ratsada A.Muang Phuket Thailand.

This cultural center is place permeated with life style, tradition, art & culture of Orang Laut (sea people). Bring "wood trap" that's wisdom of sea people design form idea, it show life of them. Here has Outdoor Activities,Stage and Exhibition of "Orang Laut".





















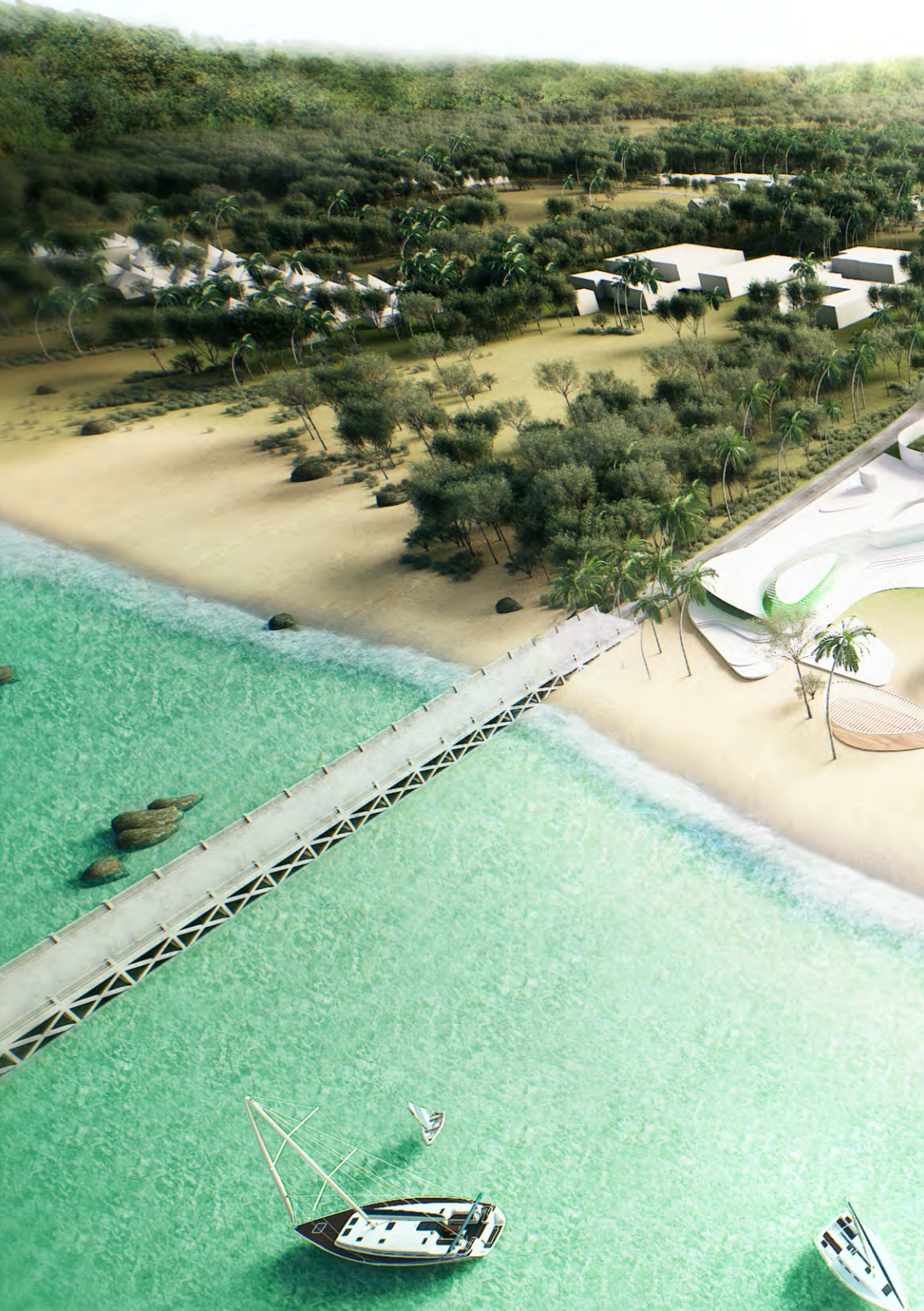
# Kameha

## **tec** Natai Resort

Natai Pangnar Thailand.

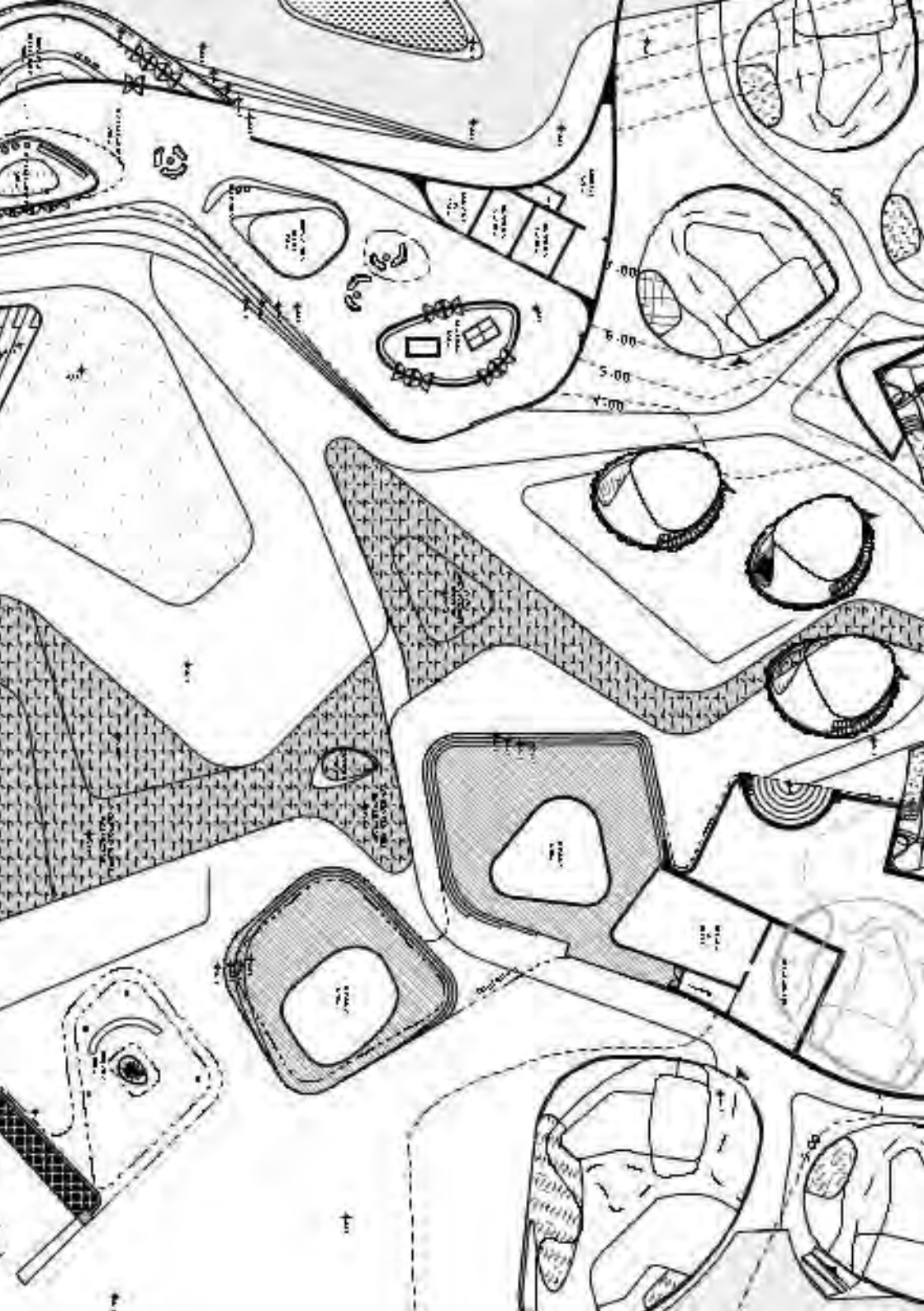
With 76 Units in variety unique villa types set on high expecting of panoramic view of Natai beach. Design is to create the unlimited building from touch of high-end appearance and combination of innovation hi technology. The project has been cooperated under 3 companies Able architects, USA and Hong Kong architects practices.



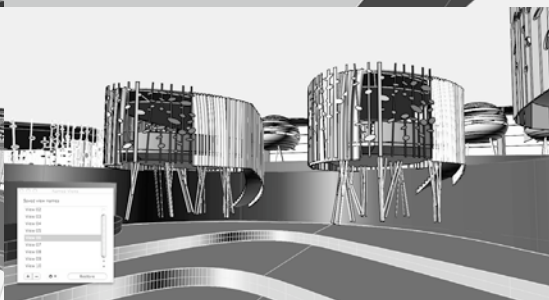
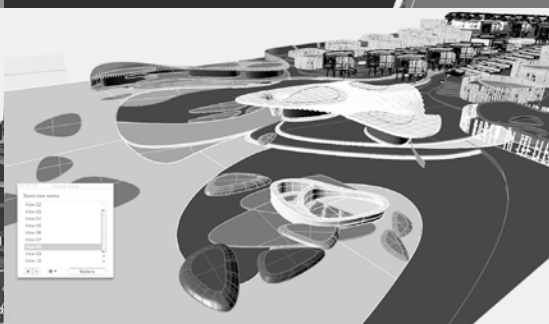
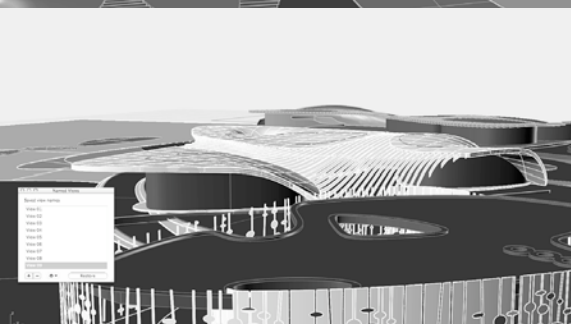
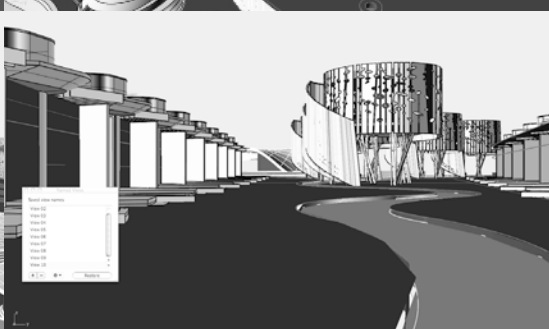
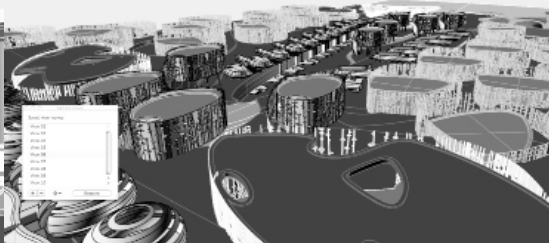
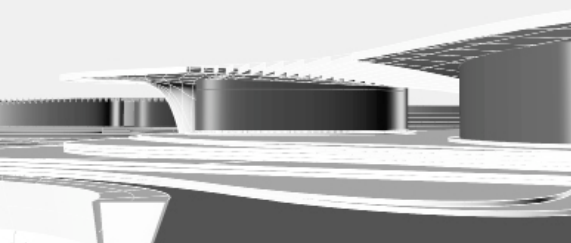
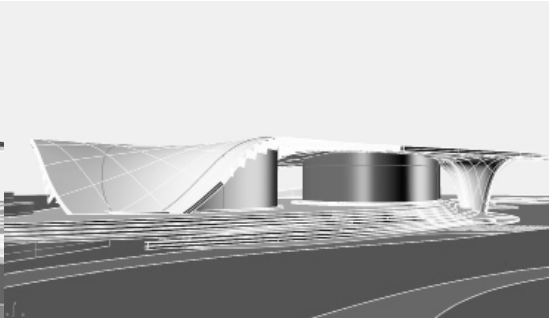
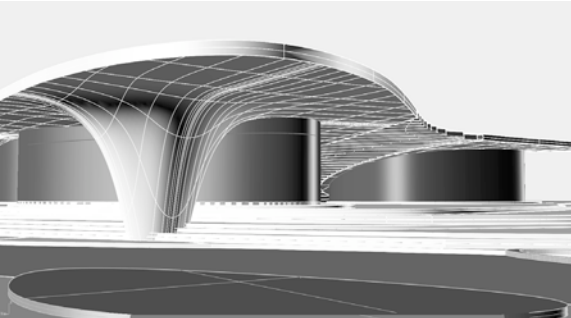
















# Able Architects

## 2012 Head Office

A.Muang Phuket Thailand.





abla reflects

38/5







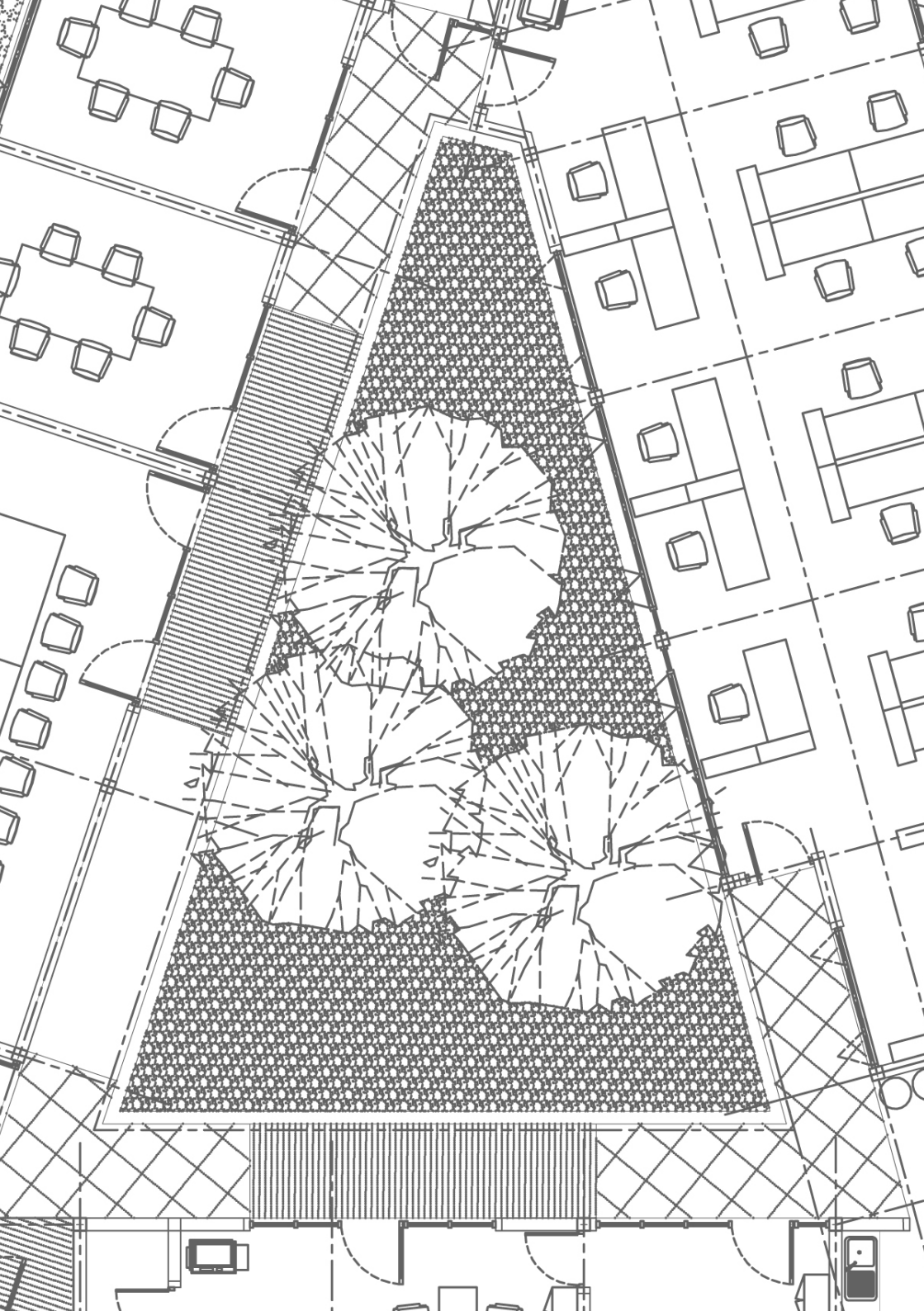


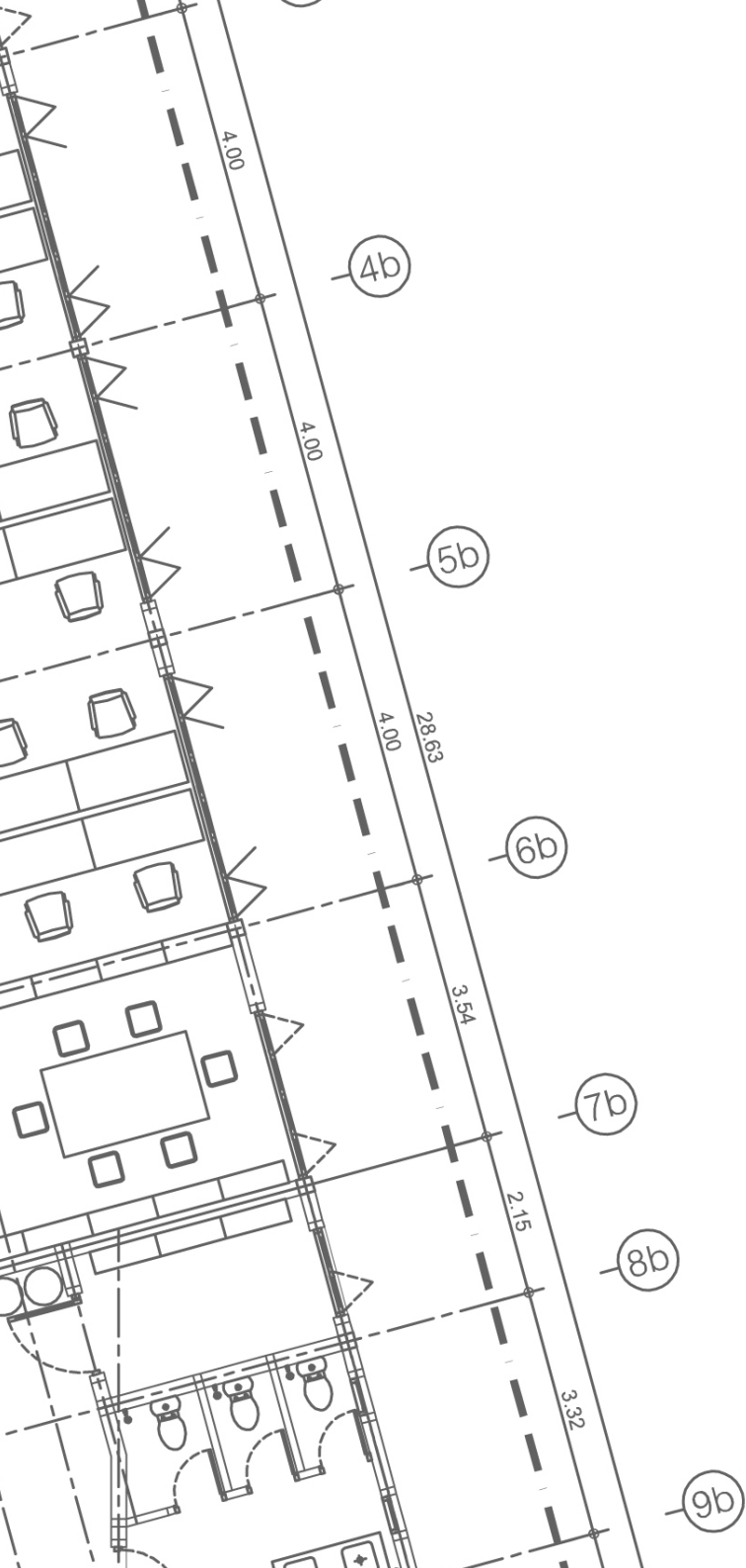




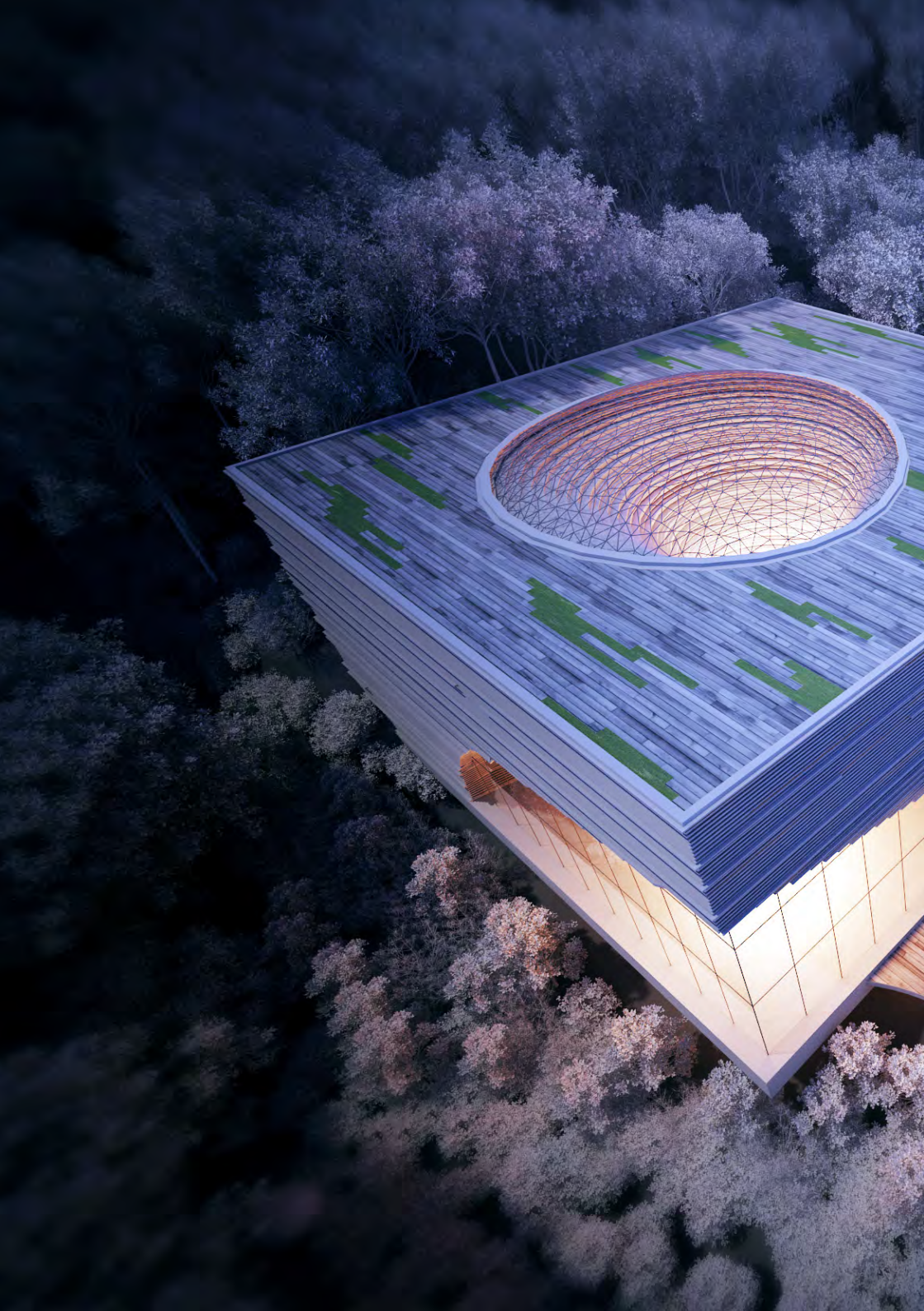








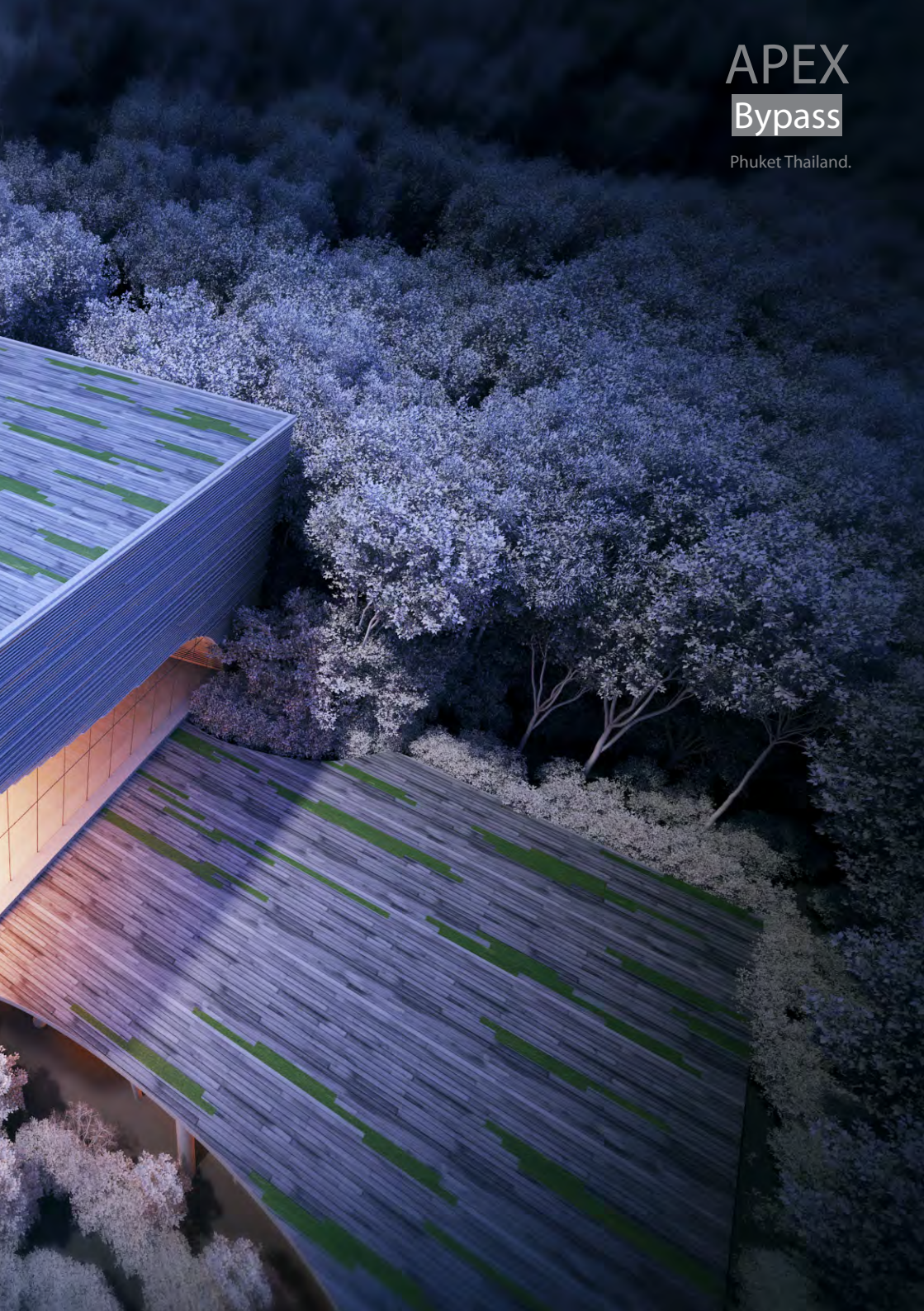


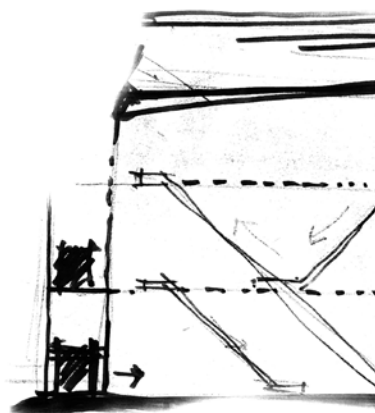
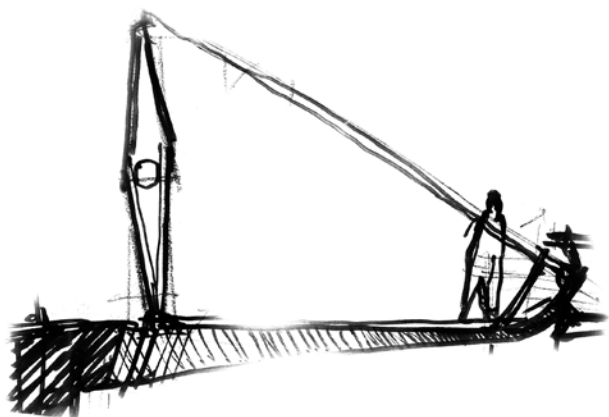




# APEX Bypass

Phuket Thailand.



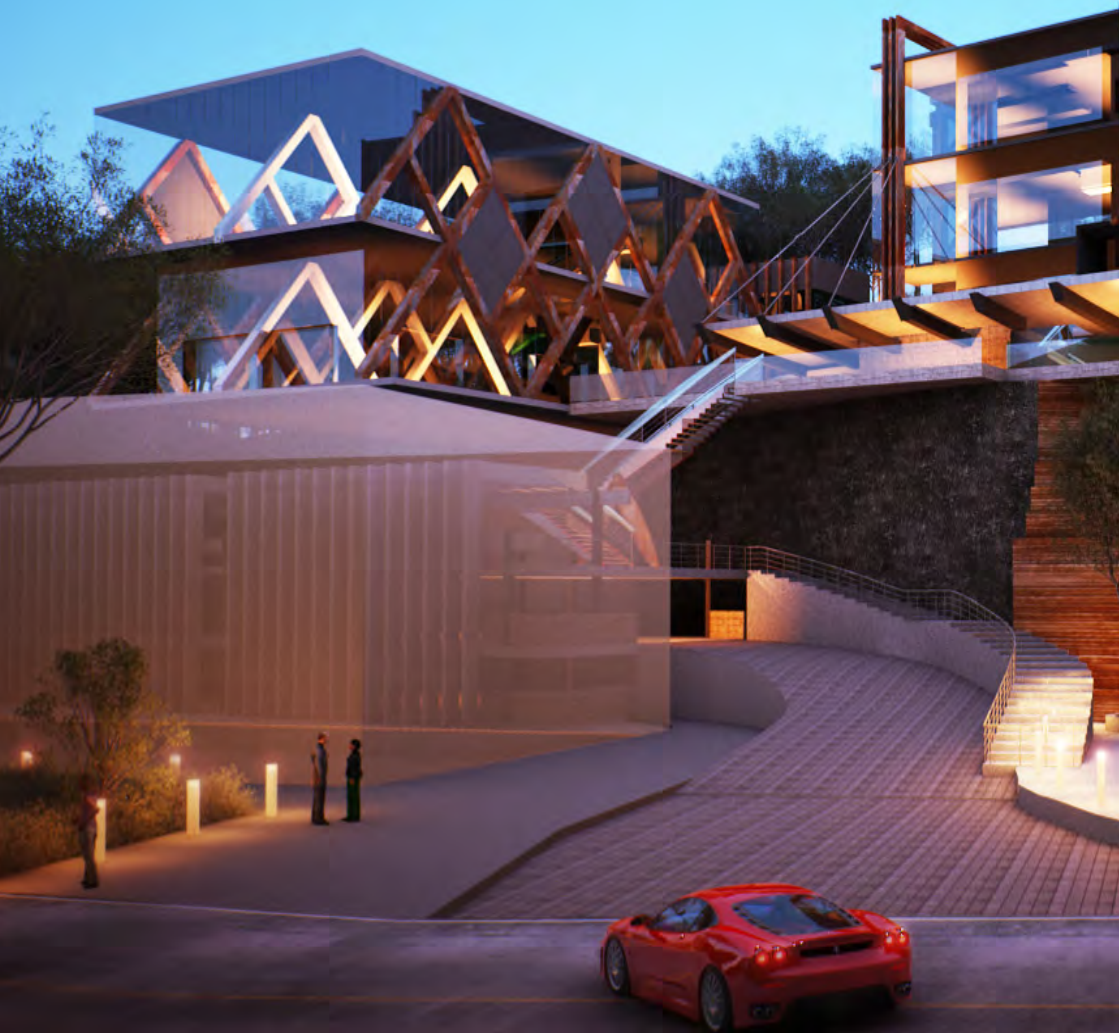




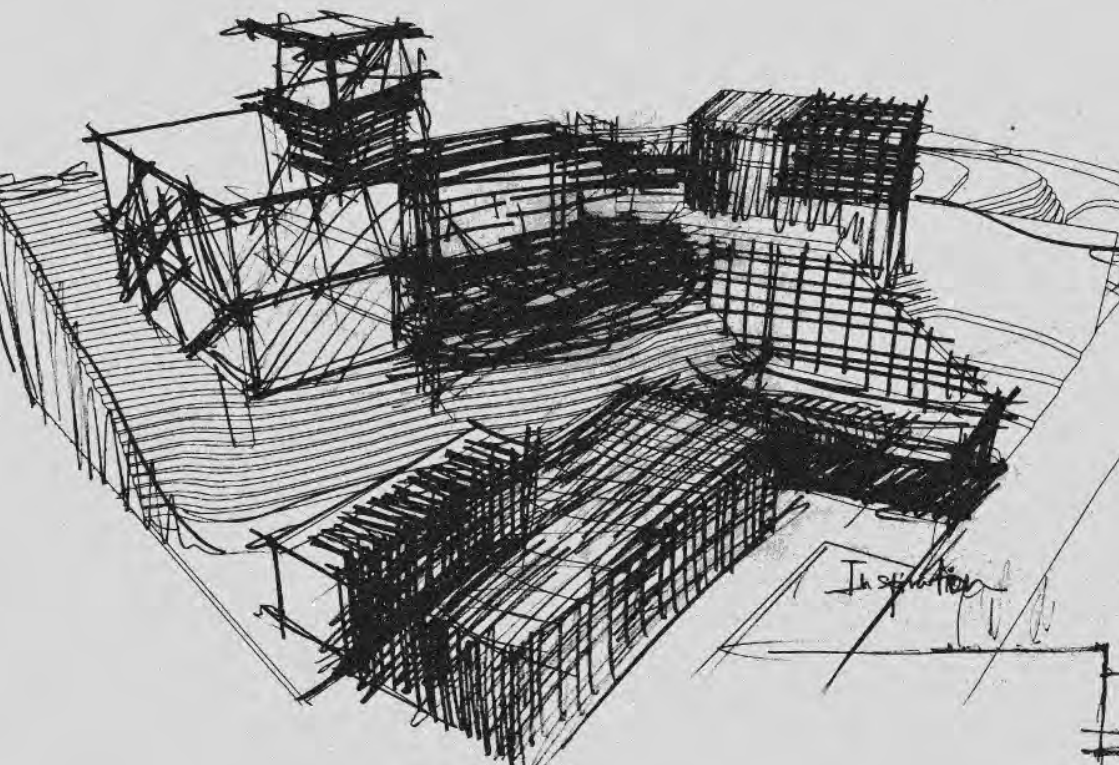
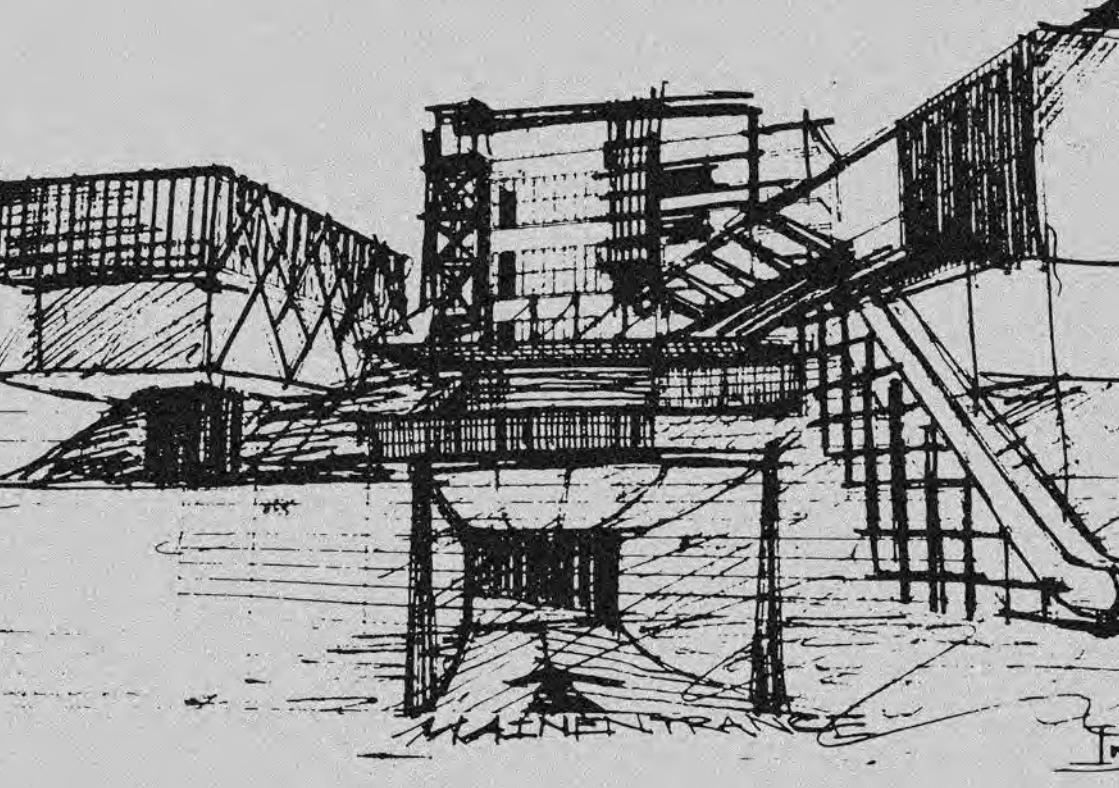
# Surin Plaza

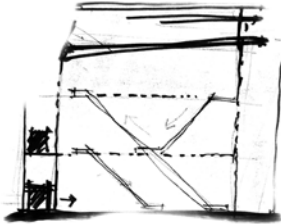
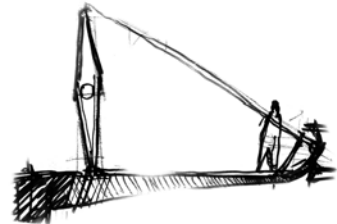
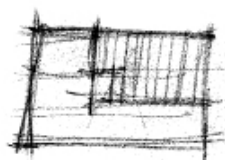
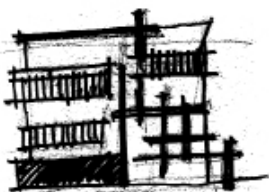
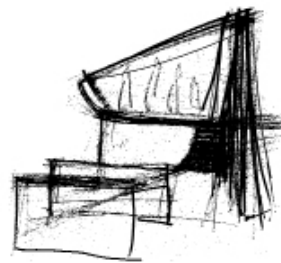
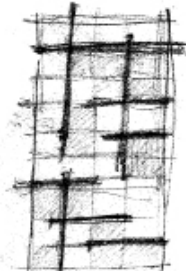
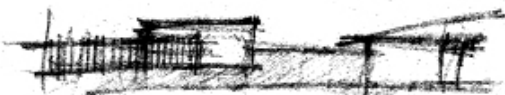
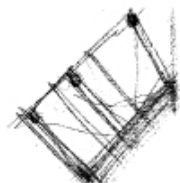
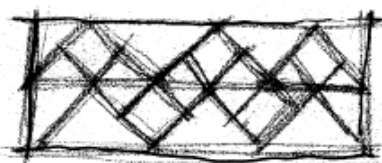
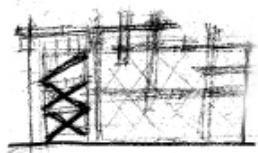
Phuket Thailand.













THE MORE YOU  
LIKE YOURSELF,  
THE LESS YOU ARE  
LIKE ANYONE ELSE,  
WHICH MAKES YOU  
UNIQUE.

WALT  
DISNEY

ZCAPE

IS A PLACE  
WHERE YOU  
KNOW  
MORE OF LESS



ZOCIETY

Zcape  
Sale Gallery

Phuket Thailand.



## BAKERY

CRISPER \$2.25  
PANACIO CRISP \$3.25  
FRESH BREAD \$2.25  
MILK \$2.25  
SCONE \$2.25

## WEEKEND

Cinnamon bun \$3.25  
'Pop Tart' \$3.25  
Coffee Cake \$3.25

## BREAKFAST

### SIDES

FRUIT SALAD \$3.25  
CARAMELIZED  
GRAPEFRUIT \$2.25

YOGHURT PARFAIT \$4.25

RECIPE (Sunny)

CHEESEN APPLE \$3.25

SAUSAGE/EGG/TOAST \$2.25

TOAST \$2.25

## ORGANIC

coffee (100% organic)  
w/ almond milk \$2.25

Latte \$2.25

Cappuccino \$2.25

Mocha \$2.25

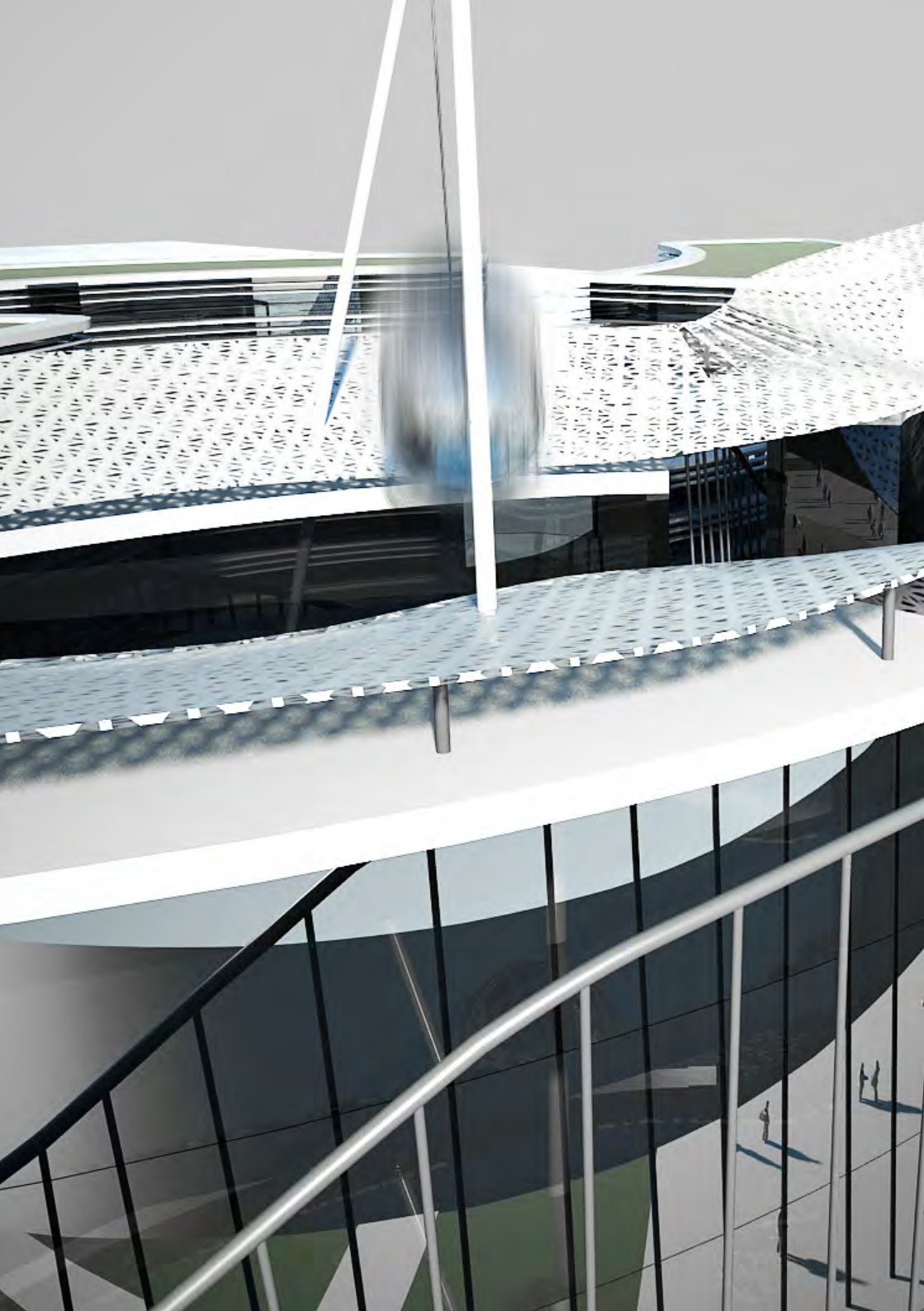
Homemade Hot Chocolate \$2.25

Americano \$2.25

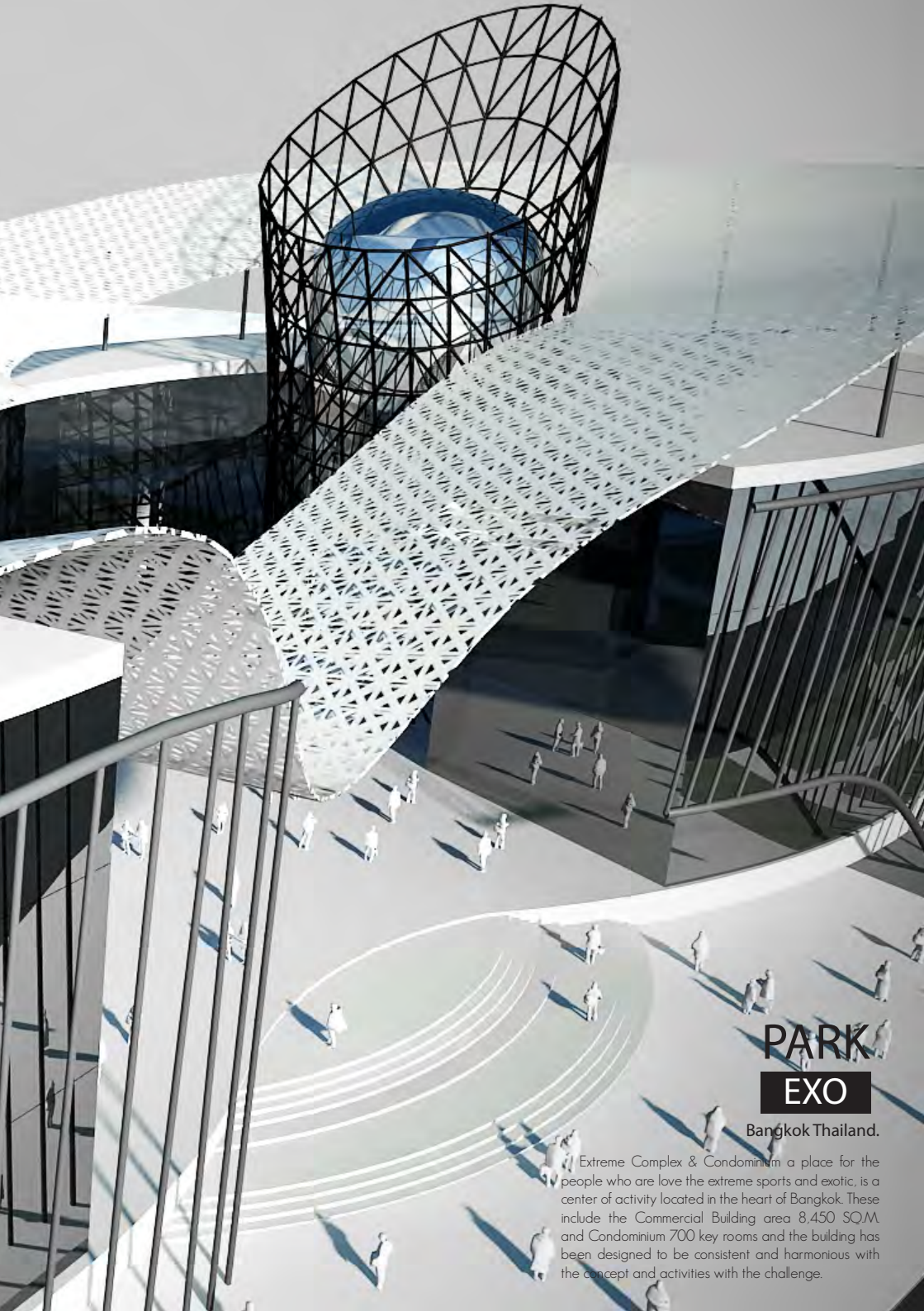
Double Espresso \$2.25









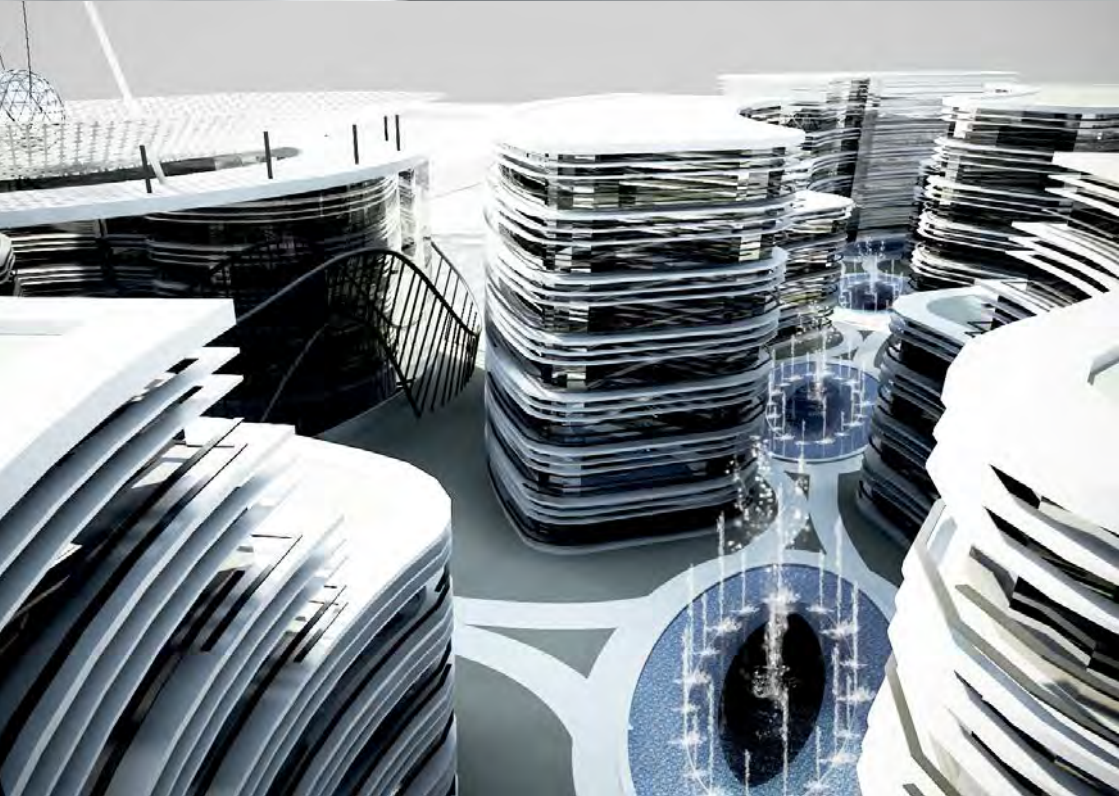
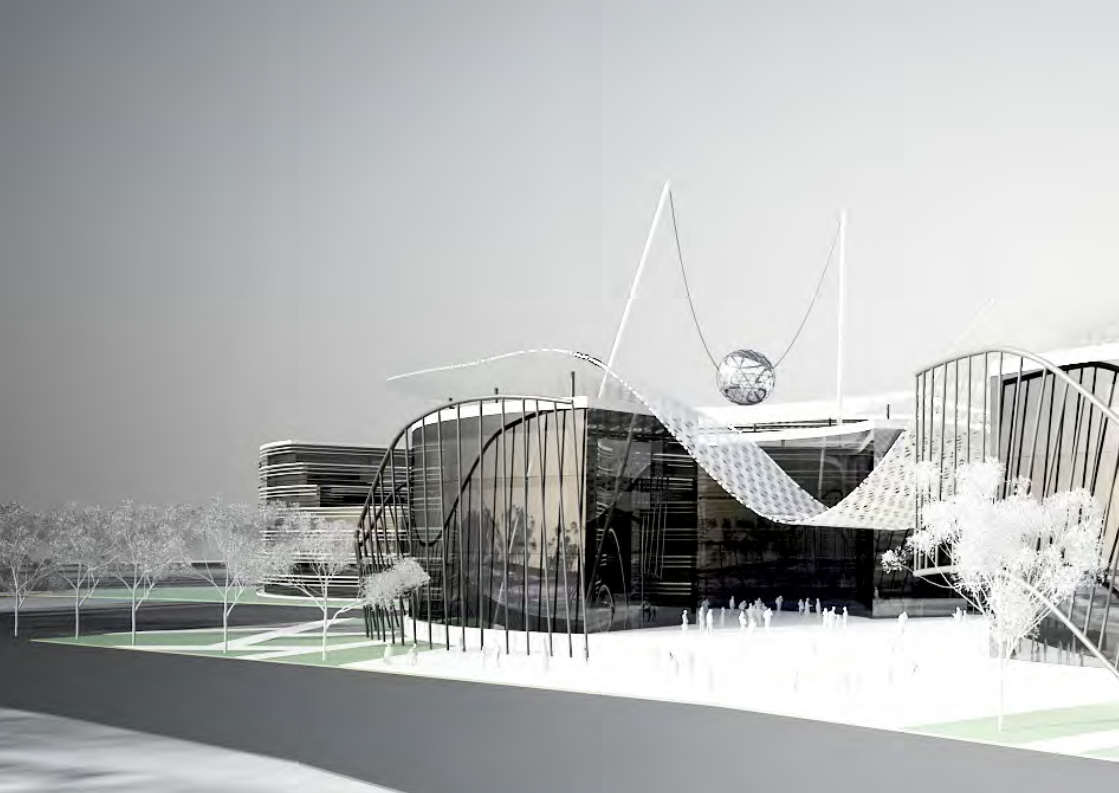


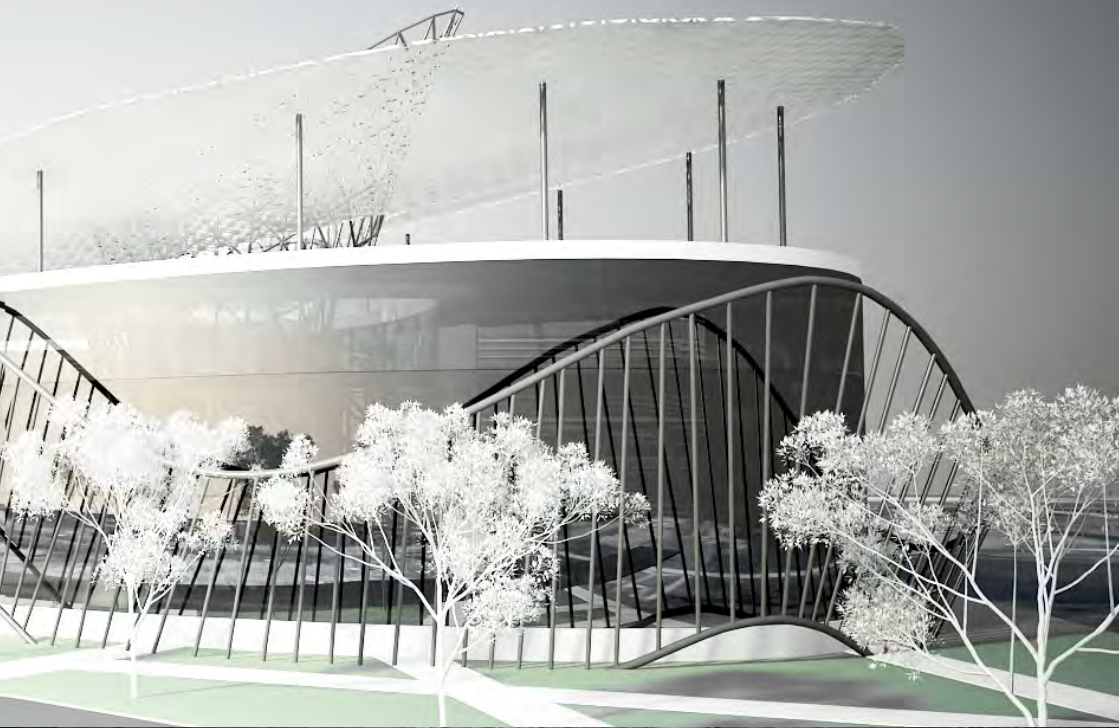
# PARK EXO

Bangkok Thailand.

Extreme Complex & Condominium a place for the people who love the extreme sports and exotic, is a center of activity located in the heart of Bangkok. These include the Commercial Building area 8,450 SQ.M. and Condominium 700 key rooms and the building has been designed to be consistent and harmonious with the concept and activities with the challenge.













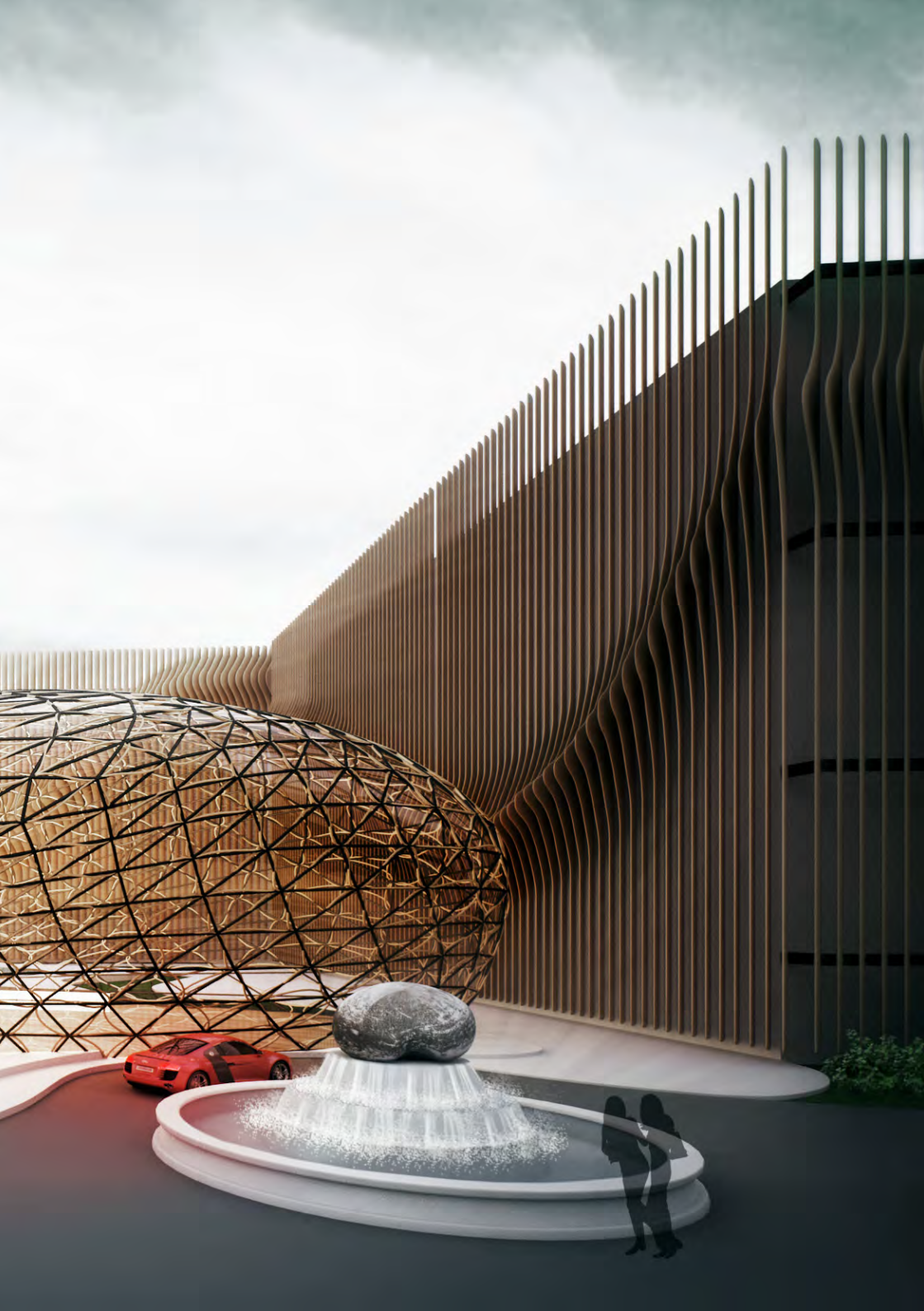


# ST ONE

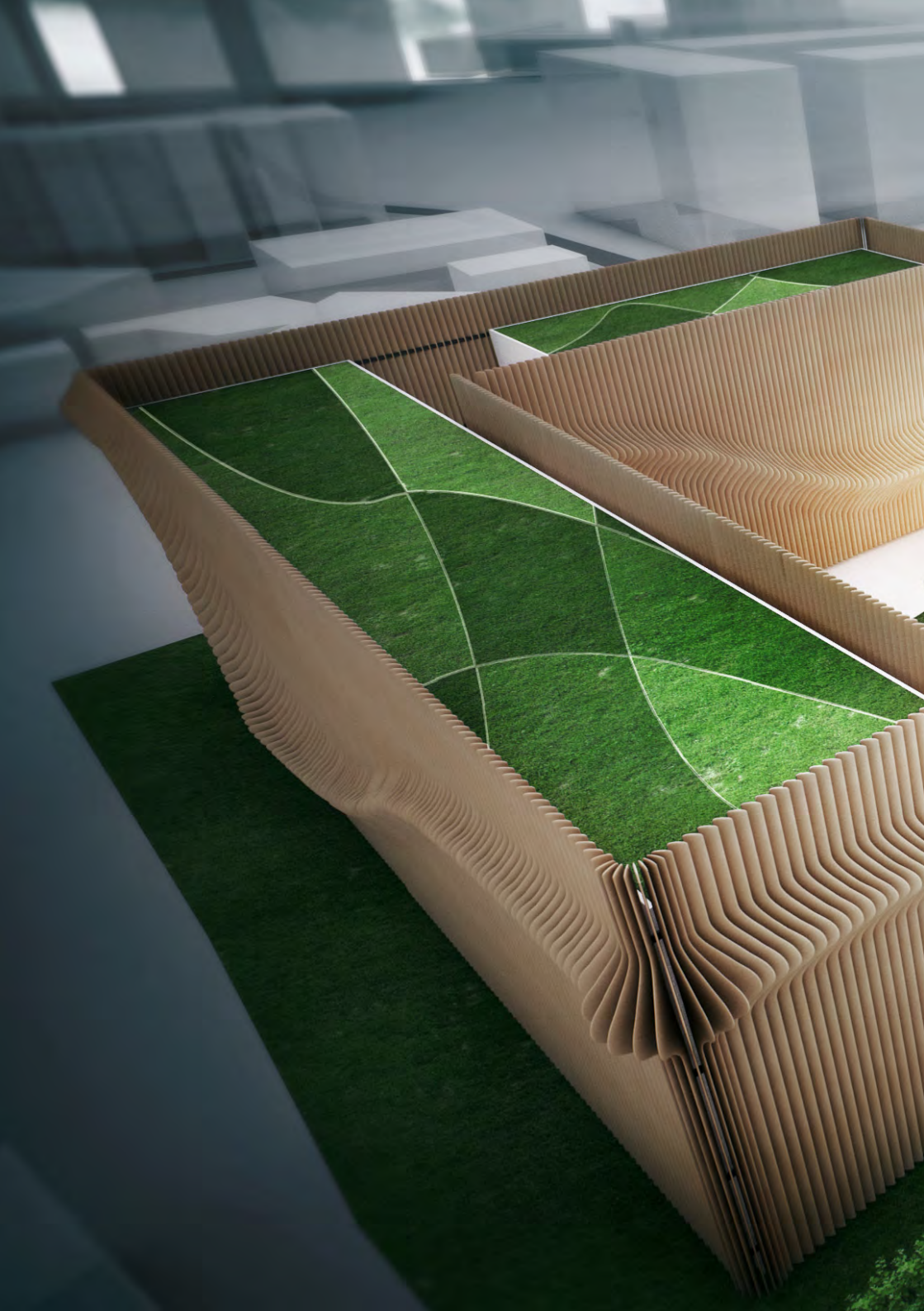
Bangkok Thailand.

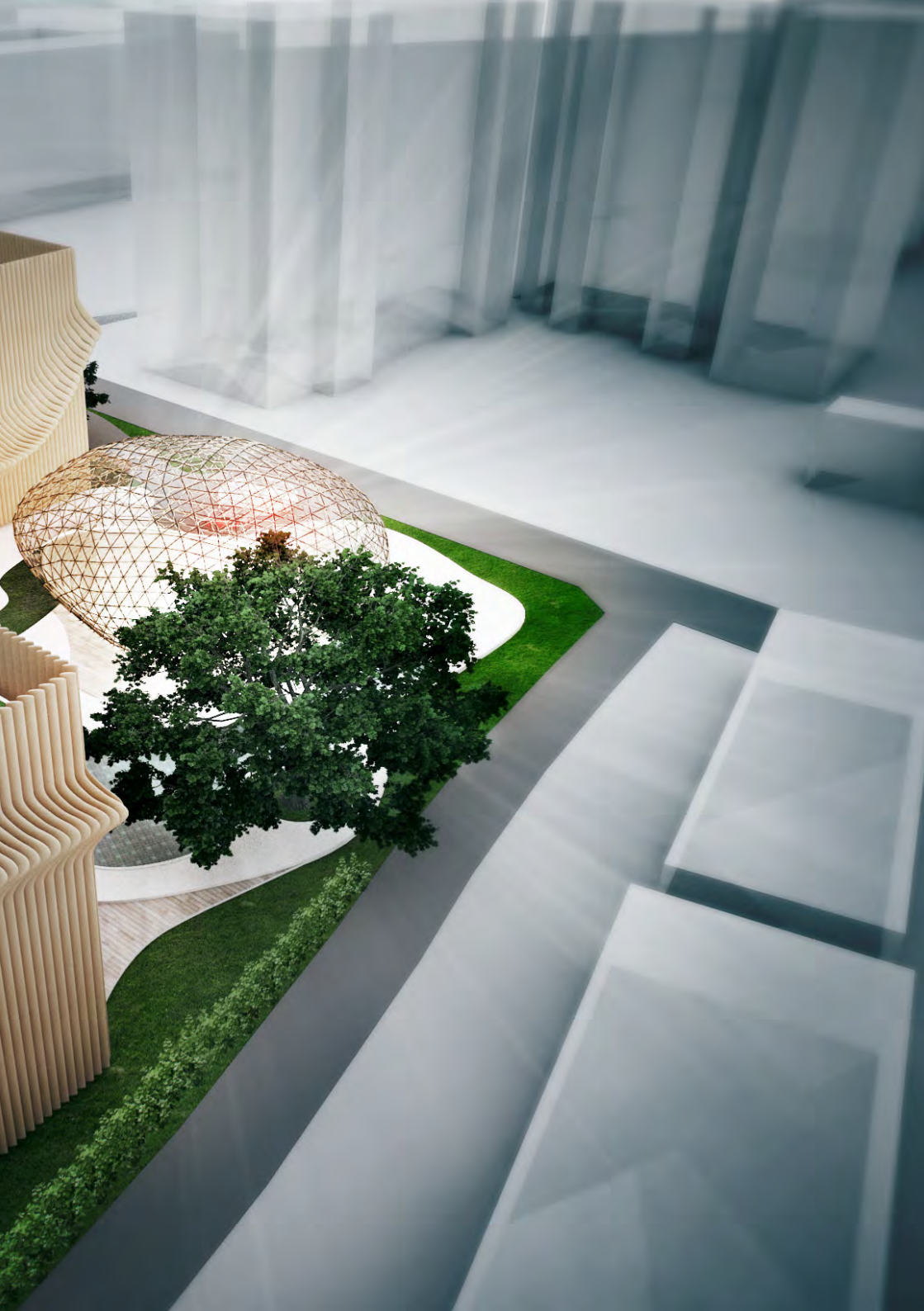




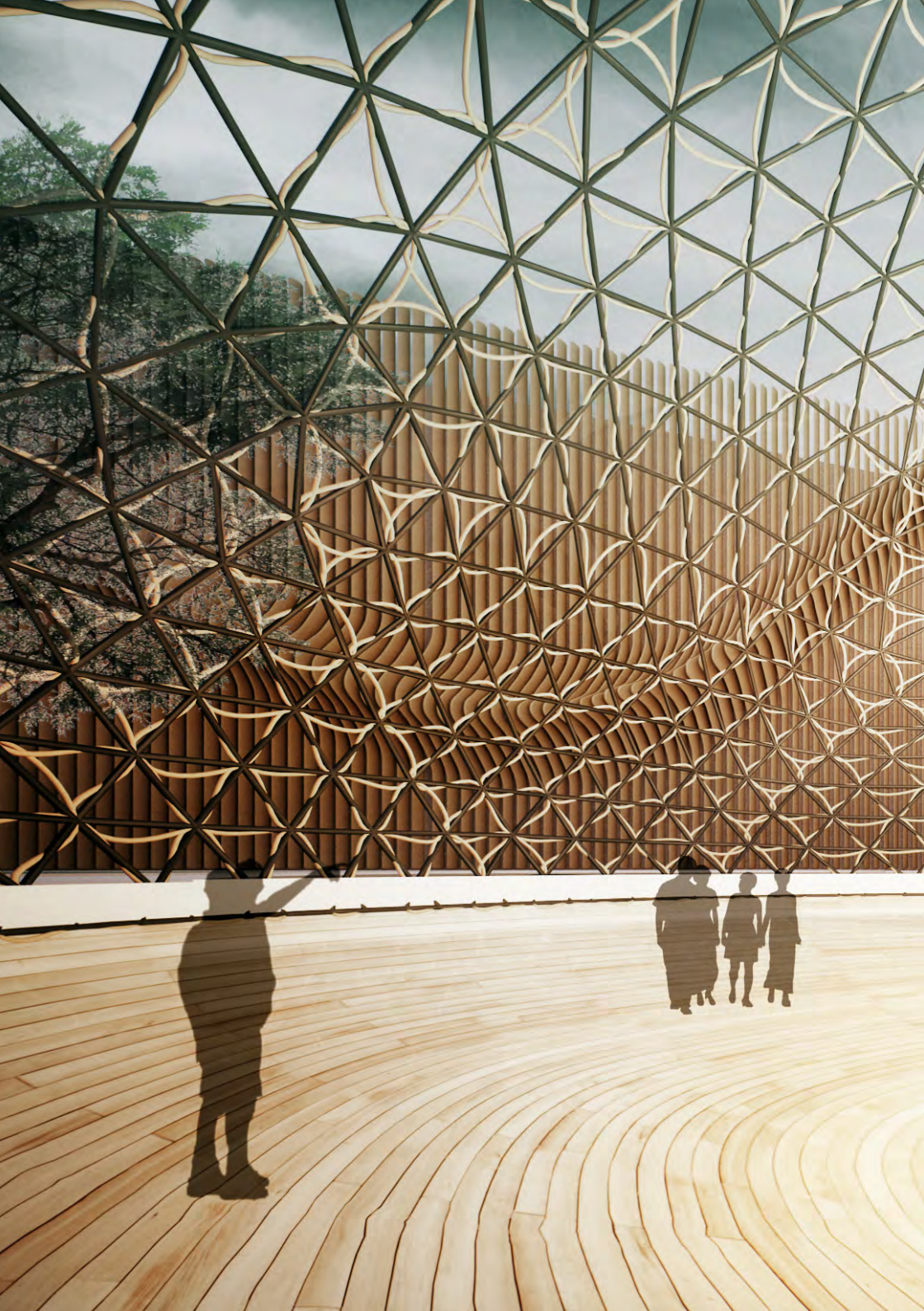




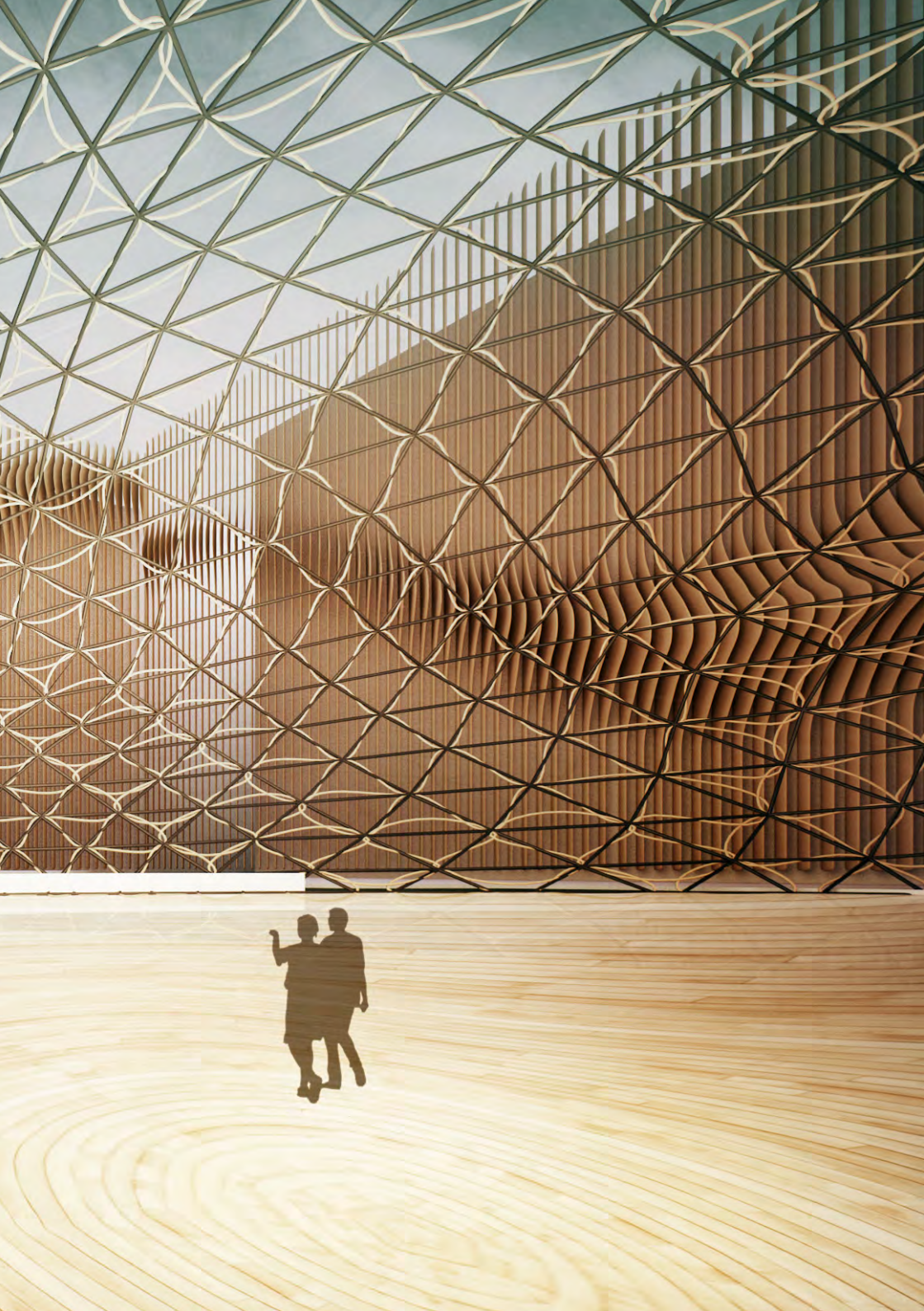


















# Villas Medica

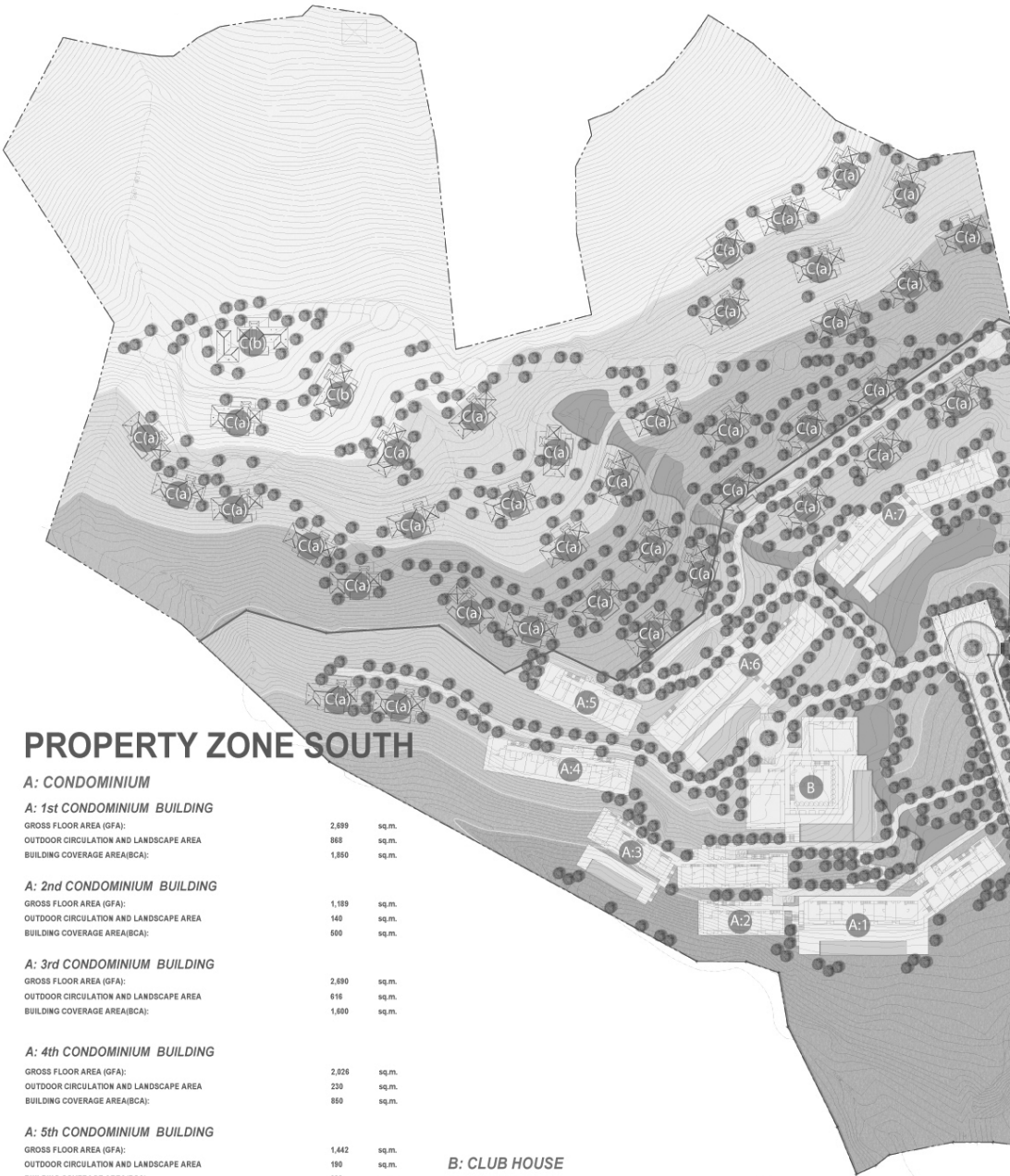
Phuket Thailand.

Villa Medica is a private clinic for naturopathy which is completely different from a regular clinic. The holistic medical approach, the atmosphere and contact between doctors and patients are so different from an usual clinic hectic.

Villa Medica is striking modern contemporary design situated on a large hill directly overlooking the Andaman Sea and mountain. The clinical department is large, sunny, bright and a separated tract to guarantee an undisturbed stay for patients and their accompanying. All the houses are private two bedrooms pool villa types which are surrounded by park with lawns and tropical garden.







# PROPERTY ZONE SOUTH

## A: CONDOMINIUM

### A: 1st CONDOMINIUM BUILDING

|  |       |       |
|--|-------|-------|
| GROSS FLOOR AREA (GFA):                | 2,899 | sq.m. |
| OUTDOOR CIRCULATION AND LANDSCAPE AREA | 968   | sq.m. |
| BUILDING COVERAGE AREA(BCA):           | 1,890 | sq.m. |

### A: 2nd CONDOMINIUM BUILDING

|  |       |       |
|--|-------|-------|
| GROSS FLOOR AREA (GFA):                | 1,189 | sq.m. |
| OUTDOOR CIRCULATION AND LANDSCAPE AREA | 140   | sq.m. |
| BUILDING COVERAGE AREA(BCA):           | 500   | sq.m. |

### A: 3rd CONDOMINIUM BUILDING

|  |       |       |
|--|-------|-------|
| GROSS FLOOR AREA (GFA):                | 2,890 | sq.m. |
| OUTDOOR CIRCULATION AND LANDSCAPE AREA | 616   | sq.m. |
| BUILDING COVERAGE AREA(BCA):           | 1,600 | sq.m. |

### A: 4th CONDOMINIUM BUILDING

|  |       |       |
|--|-------|-------|
| GROSS FLOOR AREA (GFA):                | 2,826 | sq.m. |
| OUTDOOR CIRCULATION AND LANDSCAPE AREA | 230   | sq.m. |
| BUILDING COVERAGE AREA(BCA):           | 860   | sq.m. |

### A: 5th CONDOMINIUM BUILDING

|  |       |       |
|--|-------|-------|
| GROSS FLOOR AREA (GFA):                | 1,442 | sq.m. |
| OUTDOOR CIRCULATION AND LANDSCAPE AREA | 190   | sq.m. |
| BUILDING COVERAGE AREA(BCA):           | 620   | sq.m. |

### A: 6th CONDOMINIUM BUILDING

|  |       |       |
|--|-------|-------|
| GROSS FLOOR AREA (GFA):                | 2,680 | sq.m. |
| OUTDOOR CIRCULATION AND LANDSCAPE AREA | 762   | sq.m. |
| BUILDING COVERAGE AREA(BCA):           | 1,700 | sq.m. |

### A: 7th CONDOMINIUM BUILDING

|  |       |       |
|--|-------|-------|
| GROSS FLOOR AREA (GFA):                | 2,870 | sq.m. |
| OUTDOOR CIRCULATION AND LANDSCAPE AREA | 692   | sq.m. |
| BUILDING COVERAGE AREA(BCA):           | 1,630 | sq.m. |

## B: CLUB HOUSE

|  |       |       |
|--|-------|-------|
| GROSS FLOOR AREA (GFA):                | 1,513 | sq.m. |
| OUTDOOR CIRCULATION AND LANDSCAPE AREA | 1,476 | sq.m. |
| BUILDING COVERAGE AREA(BCA):           | 1,830 | sq.m. |

## C: CLIFF VILLAS

|   |       |       |
|---|-------|-------|
| GROSS FLOOR AREA (GFA):                     | 7,723 | sq.m. |
| (a) 38 TWO BEDROOM CLIFF VILLAS @ 175sq.m.  |       |       |
| (b) 2 FAMILY CLIFF VILLA SUITES @ 270 sq.m. |       |       |
| OUTDOOR CIRCULATION AND LANDSCAPE AREA      | 0     | sq.m. |
| BUILDING COVERAGE AREA(BCA):                | 8,500 | sq.m. |

# PROPERTY ZONE NORTH

## A : HEALTH CARE CENTER

|  |       |       |
|--|-------|-------|
| GROSS FLOOR AREA (GFA):                | 1,720 | sq.m. |
| OUTDOOR CIRCULATION AND LANDSCAPE AREA | 550   | sq.m. |
| BUILDING COVERAGE AREA(BCA):           | 1,400 | sq.m. |

## B : SEMINAR CENTER

|  |       |       |
|--|-------|-------|
| GROSS FLOOR AREA (GFA):                | 1,420 | sq.m. |
| OUTDOOR CIRCULATION AND LANDSCAPE AREA | 155   | sq.m. |
| BUILDING COVERAGE AREA(BCA):           | 1,250 | sq.m. |

## C : MIND AND BODY TRAINING / CANCER CENTER / EXECUTIVE OFFICE

|  |       |       |
|--|-------|-------|
| GROSS FLOOR AREA (GFA):                | 1,370 | sq.m. |
| OUTDOOR CIRCULATION AND LANDSCAPE AREA | 840   | sq.m. |
| BUILDING COVERAGE AREA(BCA):           | 900   | sq.m. |

## D : VILLAS

|  |       |       |
|--|-------|-------|
| GROSS FLOOR AREA (GFA):                  | 7,723 | sq.m. |
| 29 THREE BEDROOM POOL VILLAS @ 215 sq.m. |       |       |
| 8 TWO BEDROOM POOL VILLAS @ 186 sq.m.    |       |       |
| OUTDOOR CIRCULATION AND LANDSCAPE AREA   | 0     | sq.m. |
| BUILDING COVERAGE AREA(BCA):             | 8,560 | sq.m. |

## E : RECEPTION PAVILION

|  |       |       |
|--|-------|-------|
| GROSS FLOOR AREA (GFA):                | 185   | sq.m. |
| OUTDOOR CIRCULATION AND LANDSCAPE AREA | 1,730 | sq.m. |
| BUILDING COVERAGE AREA(BCA):           | 185   | sq.m. |

## F : GATEWAY & GUARDHOUSE

|  |    |       |
|--|----|-------|
| GROSS FLOOR AREA (GFA):                | 46 | sq.m. |
| OUTDOOR CIRCULATION AND LANDSCAPE AREA | 0  | sq.m. |
| BUILDING COVERAGE AREA(BCA):           | 45 | sq.m. |







# The Sky 2

Phuket Thailand.

Limitless the sky 2 is .. All it time Spread further to the universe Where to start or to end The sky 2 is one big circle it is unlimited.

The Sky 2 is .. All it near by the nature Where fruitful and enjoyment start Gaining area on the greenery carpet Blue sky shines to clear water Expression of the universe substance

Where every single step can be different All it bases on and unexpected perception and harmonic of space.





the  
*Sky* dream hotel

















# Q Concept

Phuket Thailand.













# MOCA

## House

Phuket Thailand.



















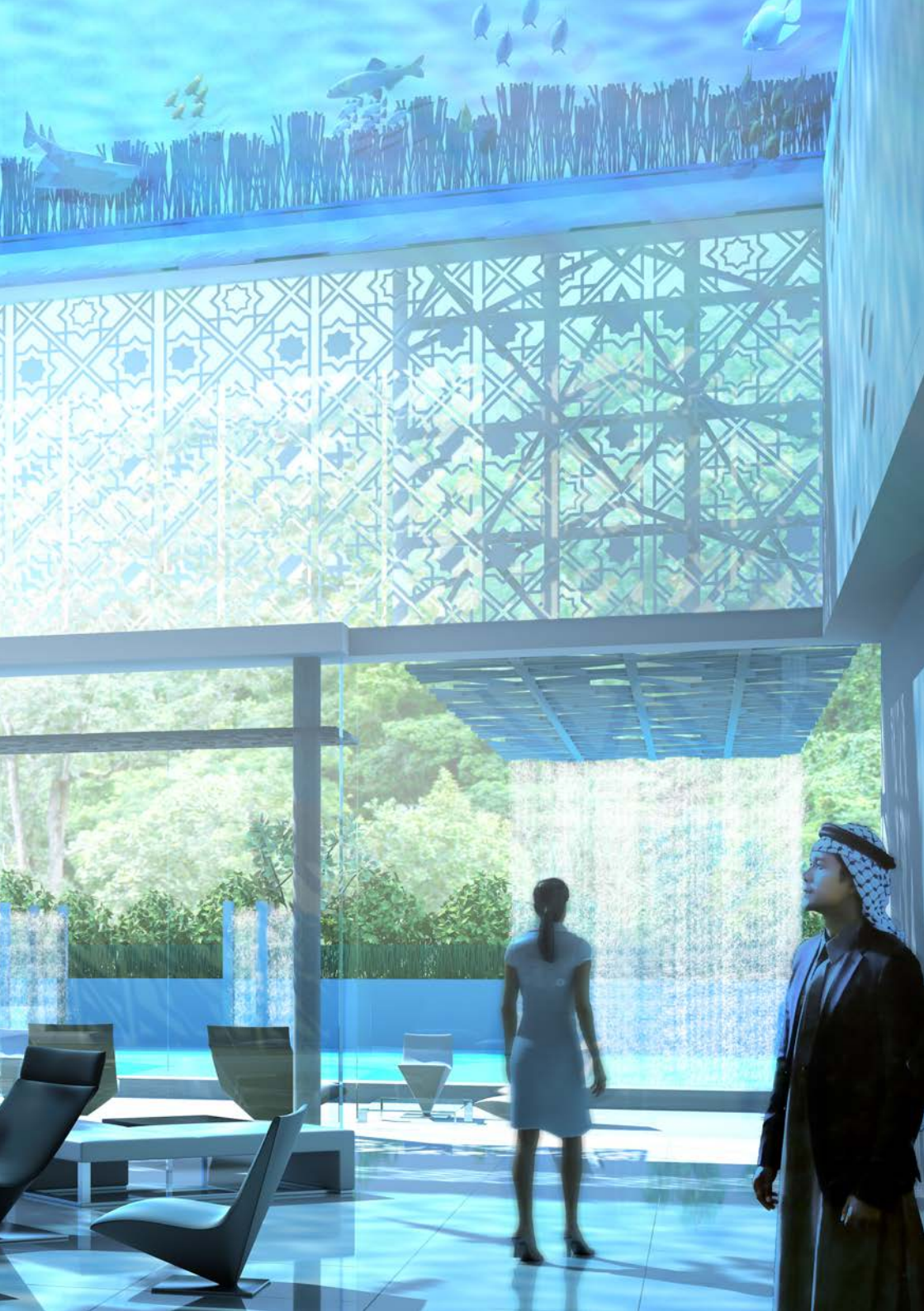
KAMALA  
Falls

Phuket Thailand.











# Blue Point

Phuket Thailand.

SITUATED IN PHUKET, THAILAND AND SOPHISTICATED IN STYLE AND DESIGN, the 20 freehold and leasehold sea view luxurious condominiums have been artistically sculpted by the internationally renowned Paul Raff Studio. Offering a touch of serenity overlooking the buzz of Patong Beach and the sparkling Andaman Sea, Bluepoint Condos are located in one of the last available sea view sites on Phuket's desirable west coast. Completely surrounded by five stunning beaches including the quiet southern tip of Patong Beach, the tranquil Tri-Trang Beach, and the island's best kept secret beaches: Paradise, Merlin and Freedom beaches.



























# Ablitex

## Eco Office

Phuket Thailand.











# Boat Avenue

Phuket Thailand.













1

## ARCHITECTURE

Reshaping The Future of Modern Form. Architectural innovation is an everyday occurrence at Able Architects, where the solutions to tomorrow's challenges for sustainable architecture are on today's drawing boards.

2

## ENGINEERING

Turning Innovative Ideas Into Reality. We are at the forefront of a new-age engineering industry of nano technology and sustainable engineering standards, making virtually any idea possible and building to benefit future generations.

3

## LANDSCAPE ARCHITECTURE

Taking Direction. Landscape Architecture is more than just conceiving a masterpiece; it is the art of enhancing landscapes to create sustainable communities for many years to come.

1. Orang laut Cultural Center
2. Kameha Natai
3. Able Architects Corporate
4. Apex Bypass
5. Surin Plaza
6. Park Exo
7. Villas Medica
8. The Sky2
9. Blue Point
10. Ablitex
11. Boat Avenue

## 3 SCAPE ECTURE

From Nature. More than simply modern building. It enhances natural environments to ensure sustainable environments to come.

## 4 PROJECT MANAGEMENT

Transparent Fast Track Solutions. Strategic architectural, design and engineering management solutions to forge the most efficient path towards successful deadline delivery while optimizing construction costs.

## 5 BRAND MANAGEMENT

Beyond Building. Achieving brand loyalty with reliable reputations is much more than just a name with our brand management solutions keeping you ahead of the competition.